

Poplar Highlands Water Storage, Study and Booster Pump Station Design City of Raceland, KY

**HOWERTON
ENGINEERING &
SURVEYING PLLC**

Client

City of Raceland
711 Chinn Street
Raceland, KY 41169

The City of Raceland had recently constructed a new 300,000 gallon storage tank. Once constructed, it was determined that it only filled halfway. In 2005, the city hired Howerton Engineering to study the tank's failure problems.

Key Staff

Richard L. Howerton, PE, PLS
Richard A. Howerton, PLS
Erik Ball, EIT
Phillip Hammond
Carl Kibbey

It was determined the previous engineering firm had not performed any hydraulic analysis of the system, and had failed to account for substantial headloss in the system from the supplying source.

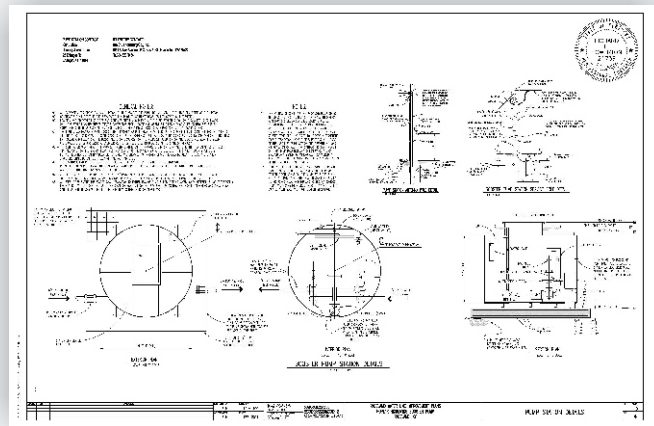
Project Cost

\$200,000

Howerton Engineering performed hydraulic monitoring, flow testing, and calibrated modeling to clearly show the tank was built too high and that a new pump station would be needed to fill the tank. The pump station was designed with telemetry and has been approved by the DOW. The project currently awaits funding to bid.

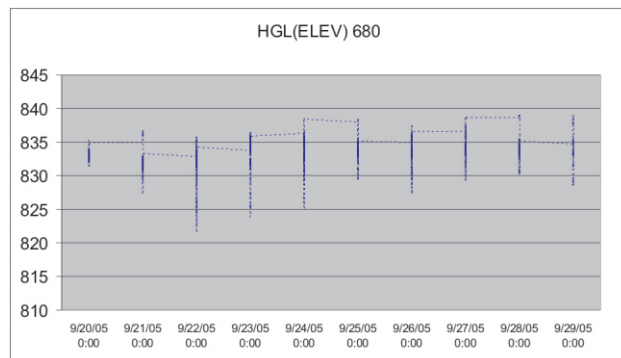
Project Completion Date

Not Yet Bid



Project Budget

\$200,000



Project Schedule

Not Yet Bid

**HOWERTON
ENGINEERING &
SURVEYING PLLC**